



室田 志保

MUROTA Shiho (ceramics painter : Satsuma Shishi)

- 1975 Born in Kagoshima.
- 1995 Joined the decorating ceramics division of "Hashimoto Tosyozan"
- 2004 Visited and stayed in Florence, Italy as an overseas student of Junior Chamber in Kagoshima with the theme, "Adapting the Satsuma ceramics in interior design".
- 2005 Studied in Kanazawa at the Kutani Pottery Studio.
- 2005 Quit the decorating ceramics division of "Hashimoto Tosyozan" after 10 years.
- 2005 Established the Atelier at Onobaru in Osumi Peninsula.
- 2007 First Exhibition at Gallery Beans.
- 2010 Special award of Button Grand-prix 15th Japan.

Greeting

12 years have passed since I was fascinated by Satsuma Buttons exhibited at Button Museum in Tokyo. For 10 years before I came in touch with the Button art I had been decorating the tea sets.

Satsuma Buttons of the late Edo period made me feel the magnitude of the universe. I strongly thought, "I want to make a contemporary Satsuma Buttons myself". Since then, I have made Satsuma Buttons by trial and error at this south-Satsuma in Japan. Satsuma Buttons used to feature the typical living and natural themes such as the ones found in the ukiyoe (Japanese style drawings in Edo period) paintings.

I'd be glad if you would not see the replica of those in old times, but my own contemporary Satsuma Buttons produced here.

Please have a look, and I will be ready to receive your advices.

Satsuma Shishi (Ceramics painter MUROTA Shiho)

Satsuma Shishi Ceramics painter MUROTA Shiho
891-2104, Tagami 3718 Tarumizu-si Kagoshima-ken Japan
URL:<http://satsuma.cc/index.html>
E-mail:info@satsuma.cc

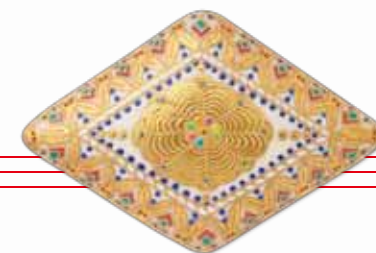


薩摩志史

satsuma.cc

室田志保

English





Explanation of Satsuma Button's pattern or design.

“pattern”



YORAKUMON

This pattern used an image of Buddha's decoration or sloping roof, and puts along the circle in this design.



USAGITUNAGIMON

Put a rabbit along the circle. This pattern is bringer of good luck. A rabbit pattern is written as a symbol of advance.



SEIGAIHAMON

It named GARAKU, this pattern means water.



SHIPPOUMON

It means seven kinds of treasure in sutra. It is popular pattern in Satsuma as auspicious pattern.

“design”



Blue bird

Divide character's blue (青) upper and lower. Upper part is regarded as branch of the tree and a gold painted bird. Lower part's pattern is a moon with "The Blue Bird" (written by Maurice Maeterlinck) motifs. And written "L' Oiseau blue", it means "The Blue Bird" in French.



TAKARA

Divide character's treasure (宝) upper and lower. Upper part's pattern is Libra. Lower part's pattern is crown. It means king's gem.

Process of Making Satsuma button

1

About Buttons's clay

Clay used for Satsuma pottery are both black Satsuma and white Satsuma. Satsuma button uses white Satsuma only.



2

Make a rough copy

Decide the design, make a rough copy with a very thin water-based ink pen (mark will boil away in kiln).



3

Making outline

Make outline by matte gold (Mix oil and gold or platinum) with a very thin weasel bristle.



4

Painting

Mix paints and color in matte gold's outline.



5

Baking

Bake in small electric kiln with 750C over 4 hours and cool.



6

Modification

Modify uneven colors and repeat No.5 process.



7

Painting by gold

Paint and heap up matte gold and bake in 620C over 3 hours.



8

Completion

Polish up the gold to complete.



Satsuma Button's bits knowledge

Satsuma Button's painting way is called "Satsuma Nishikite". In the 18th century it was beginning of Kiyomizu (in Kyoto) painting skill that lasted for 150years. This skill was brought back and improved by potters.

In the same Satsuma Buttons, they have different style of painting for the region. The specific characteristics of the Satsuma region is making a gold outline at first. Making gold line out, and paint it. This skill called "iro ire, iro kome". In other regions, baking in advance. After baking, making gold outline, gold peels away, becoming used developing Satsuma pottery's character is pattern.

MUROTA Shiho was decorating tea-sets originally, so she can paint various patterns in tiny Buttons. It's her character.

I succeed in tradition, and I get across to the next generation. It is a traditional arts successor's job.

